

User Manual and Spare Parts Book

**GARUDAN**<sup>®</sup>

**GARUDAN GS-600**

**GARUDAN GS-623**



ANITA B s.r.o.

Přemyslová 2453/7

680 01 Boskovice

Czech Republic

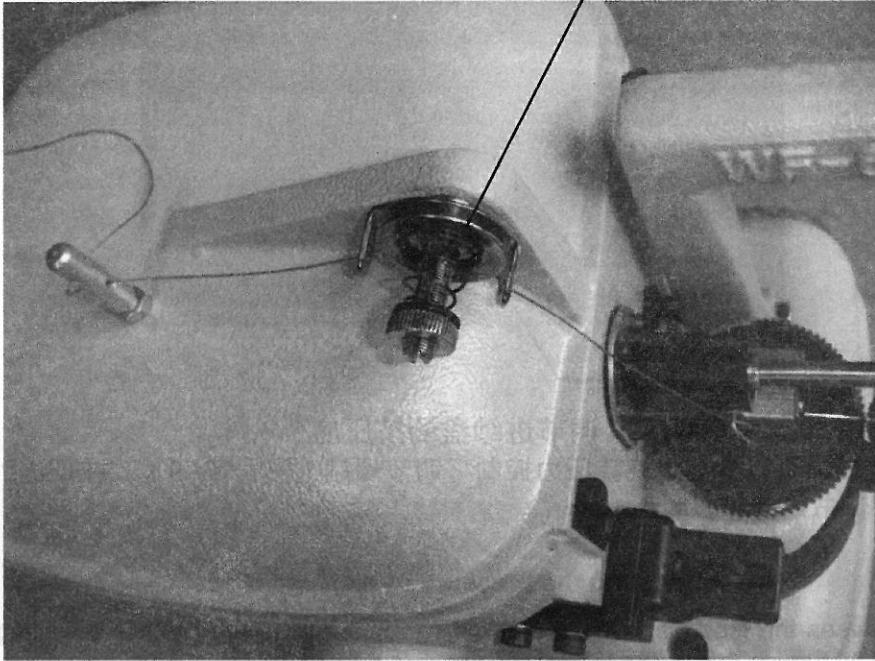
fax: +420 516 452 751

tel: +420 516 454 774,

+420 516 453 496

e-mail: [info@anita.cz](mailto:info@anita.cz)

4-1



### Threading the Machine

See threading chart fig 1. Take thread from spool on cotton stud, through thread guide stud No.4-1 and thread tension guide of first hole, forward and over between the tension discs through of second hole, down and through the hole in the needle bar tension plate No.8-7

Now turn the machine pulley until the needle bar tension plunger No.8-2 opens, and open front feed disc, pass thread under the needle and back under the needle bar into thread slot in the needle bar tension plate.

Loop thread over tension plunger No.8-2 draw forward, close up under the needle bar and into the hole in the tension plate through which the needle protrudes.

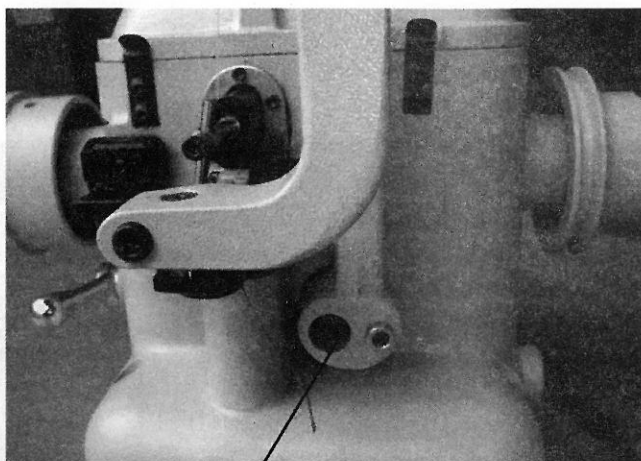
Now, from the underside, pass the thread up through the needle eye.

### Thread Tension:

The tension on the needle thread is regulated by turning thread unit No.4-1 at the left of thread tension.

To increase thread tension, turn the tension unit toward you (clockwise).

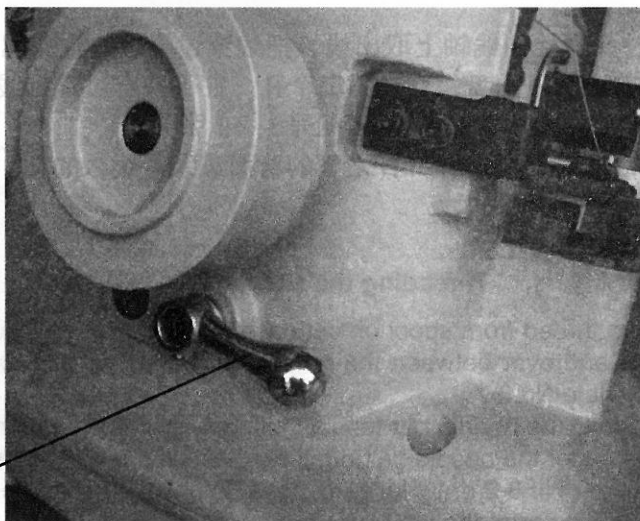
To decrease the tension, turn the tension unit away from you (counter clockwise).



**16-9**

#### **Regulating the Pressure of the Feed Discs:**

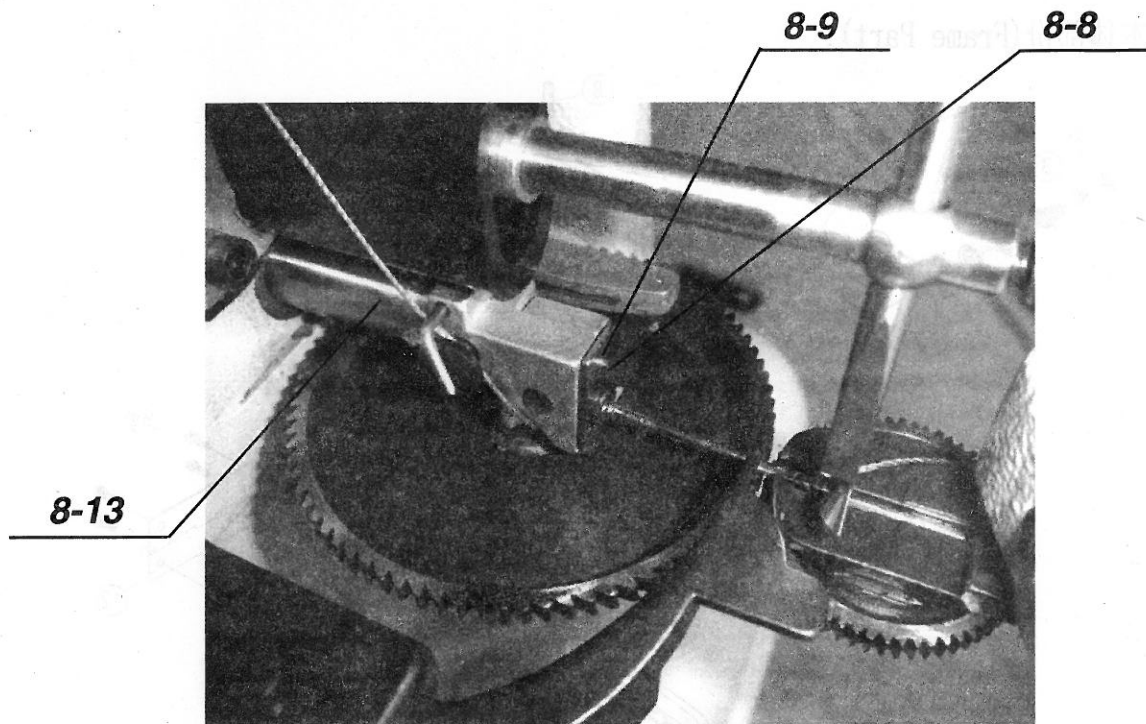
The Pressure between the feed discs may be increase by turning pressure lever adjusting screw No.16-9 to the right,or decreased by turning this screw to left.



**14-14**

#### **Chaning the Stitch Length:**

Pressing the handle(No.14-14) on the left side of the machine.Tureing the pulley clockwise your right hand,when heard"kacha"sound means the positioning is ok.Continue rotatiing the pulley and adjust it to the stitch length that you need.Rotating the pulley counterclockwise if adjusted too much,and repeatedly adjust to the stitch length that you need.Release the handle(No.14-14) and then you can starting up to work.



### **Replacing the Needle**

Turn the belt wheel until the looper swings out of the way and open the feed discs.

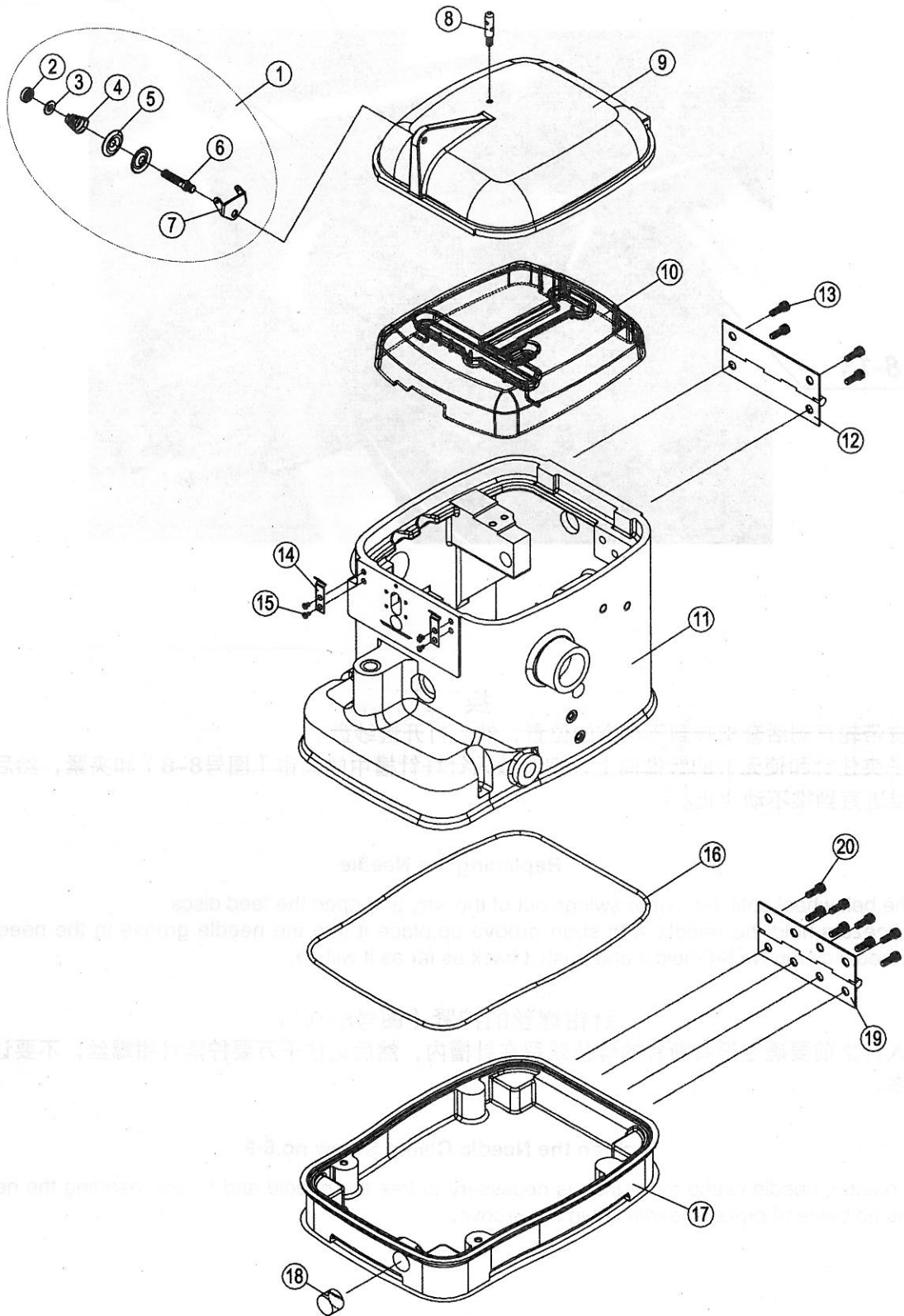
With tweezers, hold the needle with short groove up, place it into the needle groove in the needle bar slot where the needle clamp No.8-8 hold it and push it back as far as it will go.

### **Tighten the Needle Clamp Screw no.8-9**

Never release needle clamp more than is necessary to free the needle and before inserting the needle, make sure there is no piece of broken needle left in the groove.

A

(Frame Part):



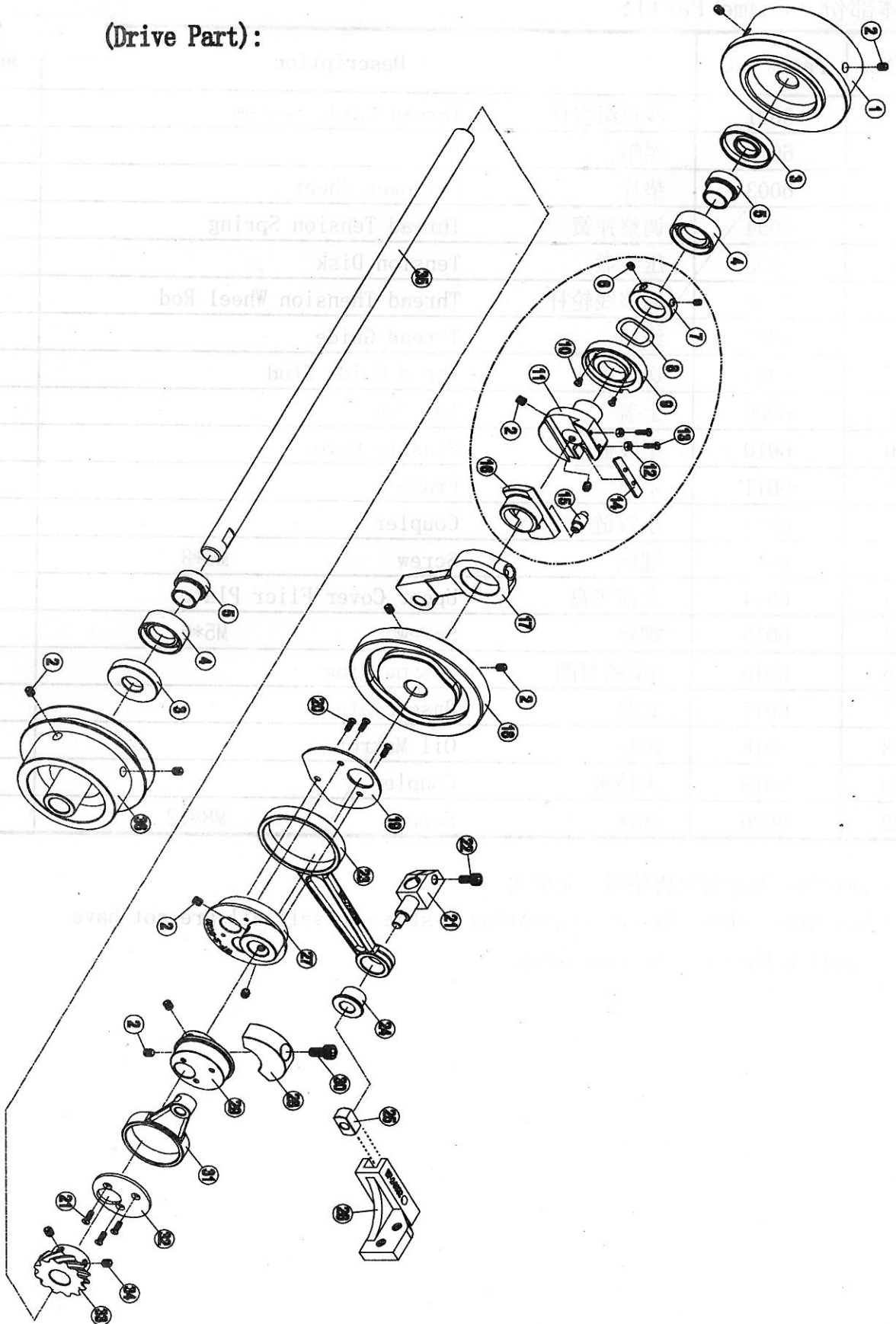
A (Frame Part):

Ref. No.	Parts No.	Description	
1	6001	Thread Guide System	1
2	6002	Nut	1
3	6003	Follower Sheet	1
4	6004	Thread Tension Spring	1
5	6005	Tension Disk	2
6	6006	Thread Thension Wheel Rod	1
7	6007	Thread Guide	1
8	6008	Thred Guide Stud	1
9	6009	Top Cop	1
10	6010	Plastic Cover	1
11	6011	Frame	1
12	6012	Coupler	1
13	6013	Screw M6*8	4
14	6014	Upper Cover Flicr Plate	2
15	6015	Screw M5*6	4
16	6016	O-type Ring	1
17	6017	Base Plate	1
18	6018	Oil Marror	1
19	6019	Coupler	1
20	6020	Screw M8*12	8

P. S. Eccentric wheel System, Regulating System are sell all, are not have  
sell a Part of the component.

B.

(Drive Part):



B (Drive Part):

Ref. No	Parts No.	Description	
1	6021	Wheel	1
2	6022	Hexagon Set Screw M6*10	2
3	6023	Seald	1
4	6024	Bearing	2
5	6025	Sleeve	2
6	6026	Hexagon Set Screw M5*6	2
7	6027	Core Tube	1
8	6028	Spring	1
9	6029	Eccentric Shaft	1
10	6030	SetScrew M4*3.8	2
11	6031	Cam Shaft	1
12	6032	Nut M4	2
13	6033	Screw M4*11	2
14	6034	Spring Plafe	1
15	6035	Fixed Axle	1
16	6036	Eccentric Wheel	1
17	6037	Transmission Shaft	1
18	6038	Cam	1
19	6039	Back Plate	1
20	6040	Screw M1/8*44	3
21	6041	Needle Bar Tension Post	1
22	6042	Screw M5*12	1
23	6043	Connection Rod	1
24	6044	Axie Bush	1
25	6045	Slide Block	1
26	6046	Needle Bar Tension Seat	1
27	6047	Eccentric	1
28	6048	Counterweight	1
29	6049	Small Eccentric Wheel	1
30	6050	Screw M6*12	1
31	6051	Connection	1
32	6052	Back Plate	1
33	6053	Helical Gear	1
34	6054	Hexagon Set Screw M6*8	2
35	6055	Main Shaft	1
36	6056	Belt Wheel	1

P.S.Eccentric wheel System, Connection system are sell all, are not have sell a Part of the component





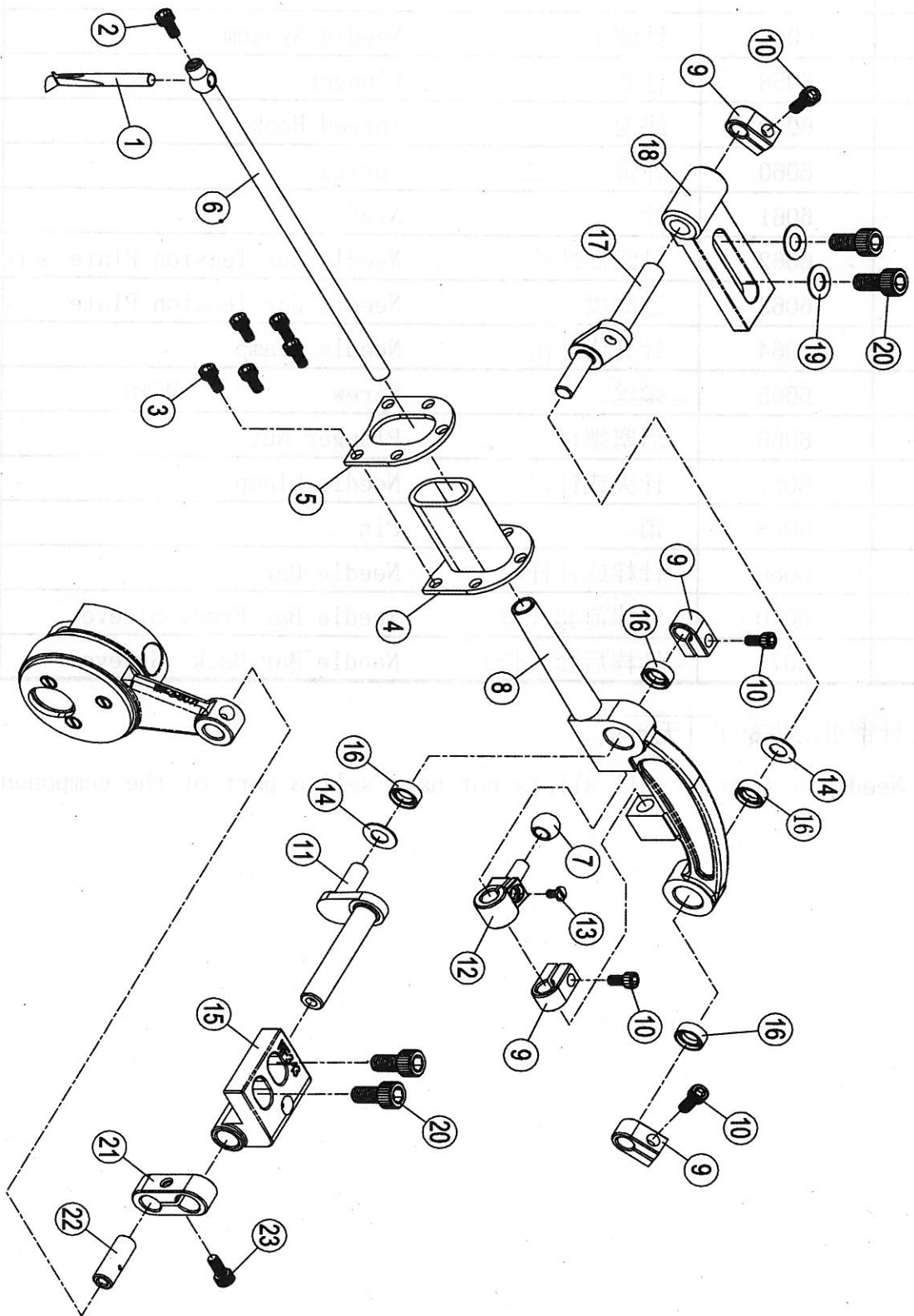
C (Needle Bar Part):

Ref.No	Parts No.	Description	
1	6057	Needle System	1
2	6058	Plunger	1
3	6059	Thread Hook	1
4	6060	Spring	1
5	6061	Needle	1
6	6062	Needle Bar Tension Plate Scre	1
7	6063	Needle Bar Tension Plate	1
8	6064	Needle Clamp	1
9	6065	Screw M5*8	1
10	6066	Plunger Nut	1
11	6067	Needle Clamp	1
12	6068	Pin	1
13	6069	Needle Bar	1
14	6070	Needle Bar Front Sleeve	1
15	6071	Needle Bar Back Sleeve	1

P. S.

P.S.Needle System is sell all, is not have sell a part of the component

D. (Nooked Needle Part):



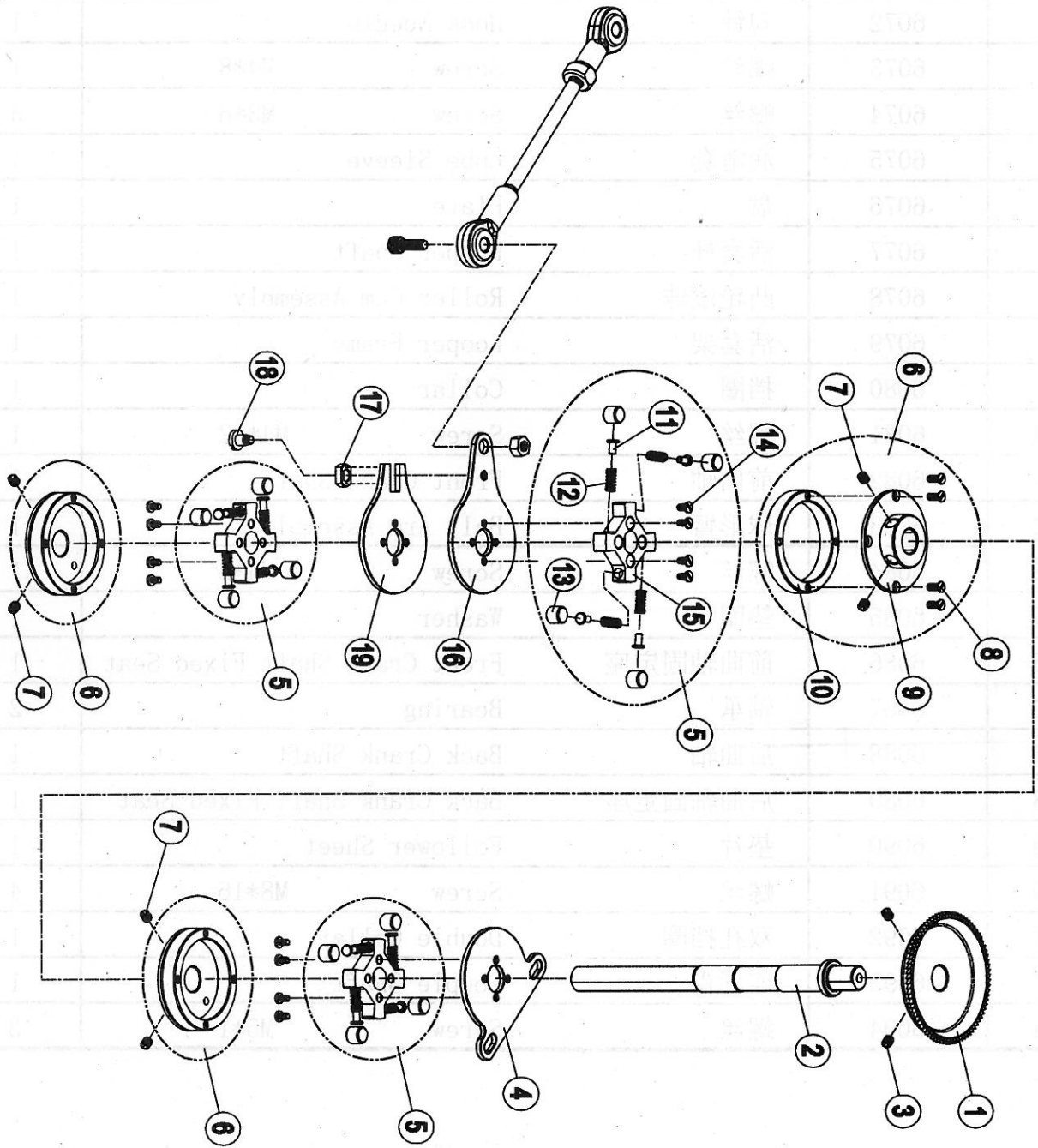
D

(Nooked Needle Part):

Ref. No	Parts No.	Description	
1	6072	Hook Needle	1
2	6073	Screw M4*8	1
3	6074	Screw M3*6	5
4	6075	Lube Sleeve	1
5	6076	Plate	1
6	6077	Looper Shaft	1
7	6078	Roller Cam Assembly	1
8	6079	Looper Frame	1
9	6080	Collar	1
10	6081	Screw M4*12	1
11	6082	Front Crank Shaft	1
12	6083	Ball Arm Assembly	1
13	6084	Screw M4*8	1
14	6085	Washer	1
15	6086	Front Crank Shaft Fixed Seat	1
16	6087	Bearing	2
17	6088	Back Crank Shaft	1
18	6089	Back Crank Shaft Fixed Seat	1
19	6090	Follower Sheet	1
20	6091	Screw M8*16	4
21	6092	Double Collar	1
22	6093	Couple Shaft	1
23	6094	Screw M5*1	3

E.

(Feeding Part) 1/2:



E. (Feeding Part) 1/2:

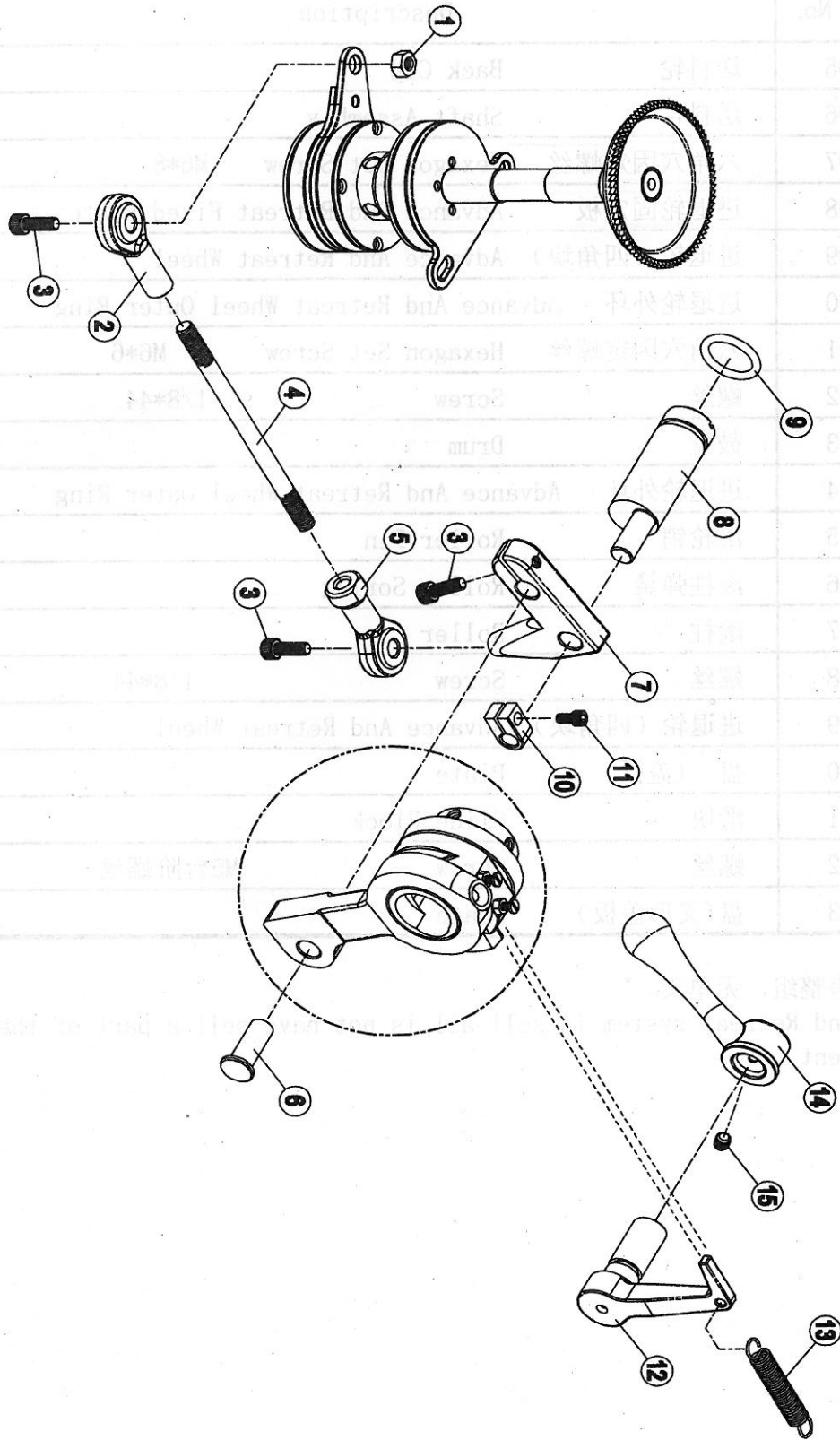
Ref. No	Parts No.	Description	
1	6095	Back Cup	1
2	6096	Shaft Assembly	1
3	6097	Hexagon Set Screw M6*8	2
4	6098	Advance And Retreat Fixed Plate	1
5	6099	Advance And Retreat Wheel	1
6	6100	Advance And Retreat Wheel Outer Ring	1
7	6101	Hexagon Set Screw M6*6	6
8	6102	Screw 1/8*44	24
9	6103	Drum	1
10	6104	Advance And Retreat Wheel Outer Ring	1
11	6105	Roller Pin	1
12	6106	Roller Spring	1
13	6107	Roller	1
14	6108	Screw 1/8*44	1
15	6109	Advance And Retreat Wheel	1
16	6110	Plate	1
17	6111	Slide Block	1
18	6112	Screw M5	1
19	6113	Plate	1

P. S.

P. S. Advance and Retreat system is sell all, is not have sell a part of the component

E.

(Feeding Part) 2/2:

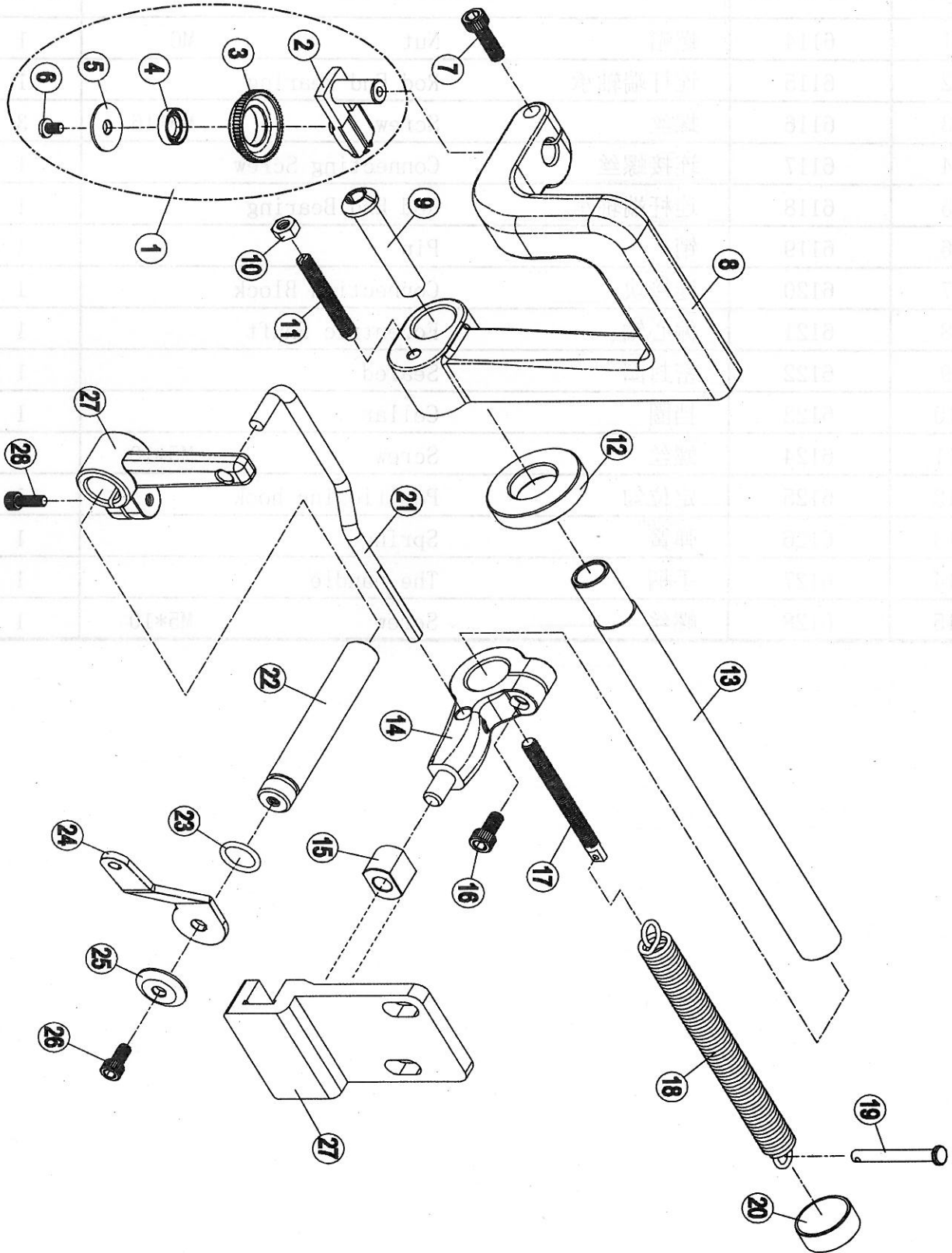


E (Feeding Part) 2/2:

Ref. No	Parts No.	Description	
1	6114	Nut M6	1
2	6115	Rod End Bearing	1
3	6116	Screw M6*16	3
4	6117	Connecting Screw	1
5	6118	Rod End Bearing	1
6	6119	Pin	1
7	6120	Connection Block	1
8	6121	Eccentric Shaft	1
9	6122	Sealed	1
10	6123	Collar	1
11	6124	Screw M5*10	1
12	6125	Positioning hook	1
13	6126	Spring	1
14	6127	The handle	1
15	6128	Screw M5*10	1



F. (Pressing Front Wheel Part):



F

## (Pressing Front Wheel Part):

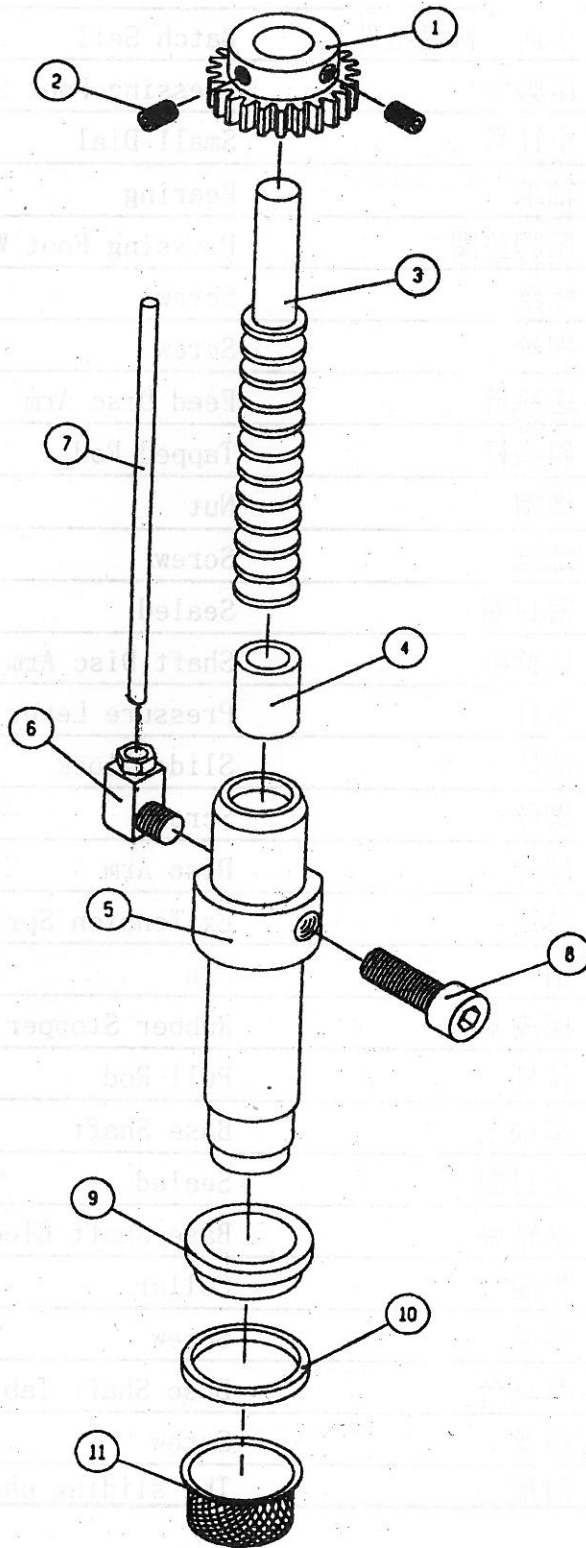
Ref.No	Parts No.	Description	
1	6129	Batch Sell	1
2	6130	Pressing Foot Seat	1
3	6131	Small Dial	1
4	6132	Bearing	1
5	6133	Pressing Foot Wash	1
6	6134	Screw 1/8	1
7	6135	Screw M6*15	1
8	6136	Feed Disc Arm	1
9	6137	Tapped Rod	1
10	6138	Nut M6	1
11	6139	Screw M6*40	1
12	6140	Sealed	1
13	6141	Shaft Disc Arm	1
14	6142	Pressure Lever	1
15	6143	Slide Block	1
16	6144	Screw M6*15	1
17	6145	Disc Arm	1
18	6146	Ex Tension Spring	1
19	6147	Pin	1
20	6148	Rubber Stopper	1
21	6149	Pull Rod	1
22	6150	Base Shaft	1
23	6151	Sealed	1
24	6152	Base Shaft Block	1
25	6153	Collar	1
26	6154	Screw M5*8	1
27	6155	Base Shaft Table	1
28	6156	Screw M8*16	1
29	6157	The sliding channel	1

P. S.

P. S. Pressing Eoot System is sell all, is not have sell a part of the component

G.

(Driving Oil Part):

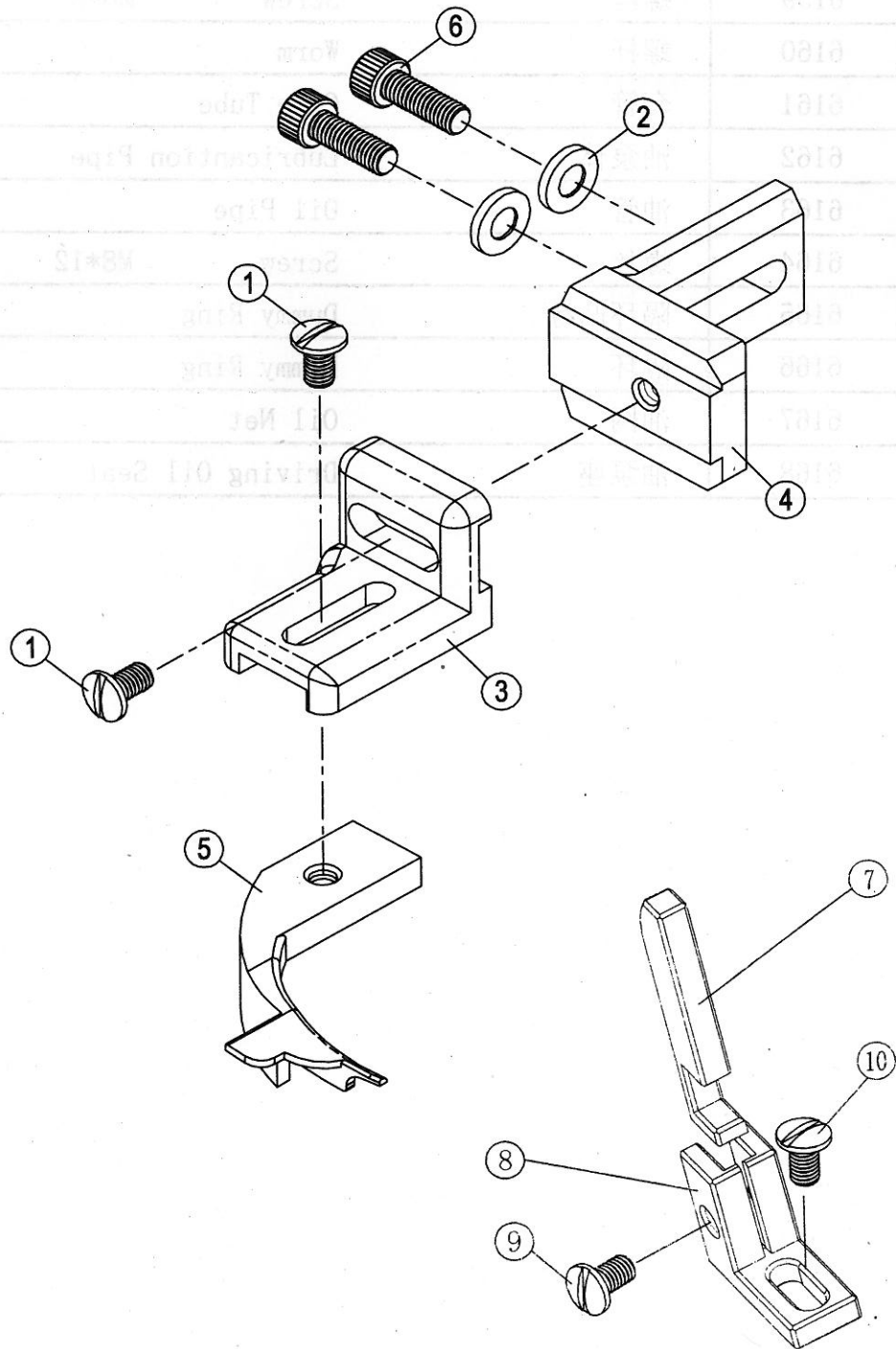


G. (Driving Oil Part):

Ref.No	Parts No.	Description	
1	6158	Gear	1
2	6159	Screw M6*8	2
3	6160	Worm	1
4	6161	Core Tube	1
5	6162	Lubrication Pipe	1
6	6163	Oil Pipe	1
7	6164	Screw M8*12	1
8	6165	Dummy Ring	1
9	6166	Dummy Ring	1
10	6167	Oil Net	1
11	6168	Driving Oil Seat	1

H.

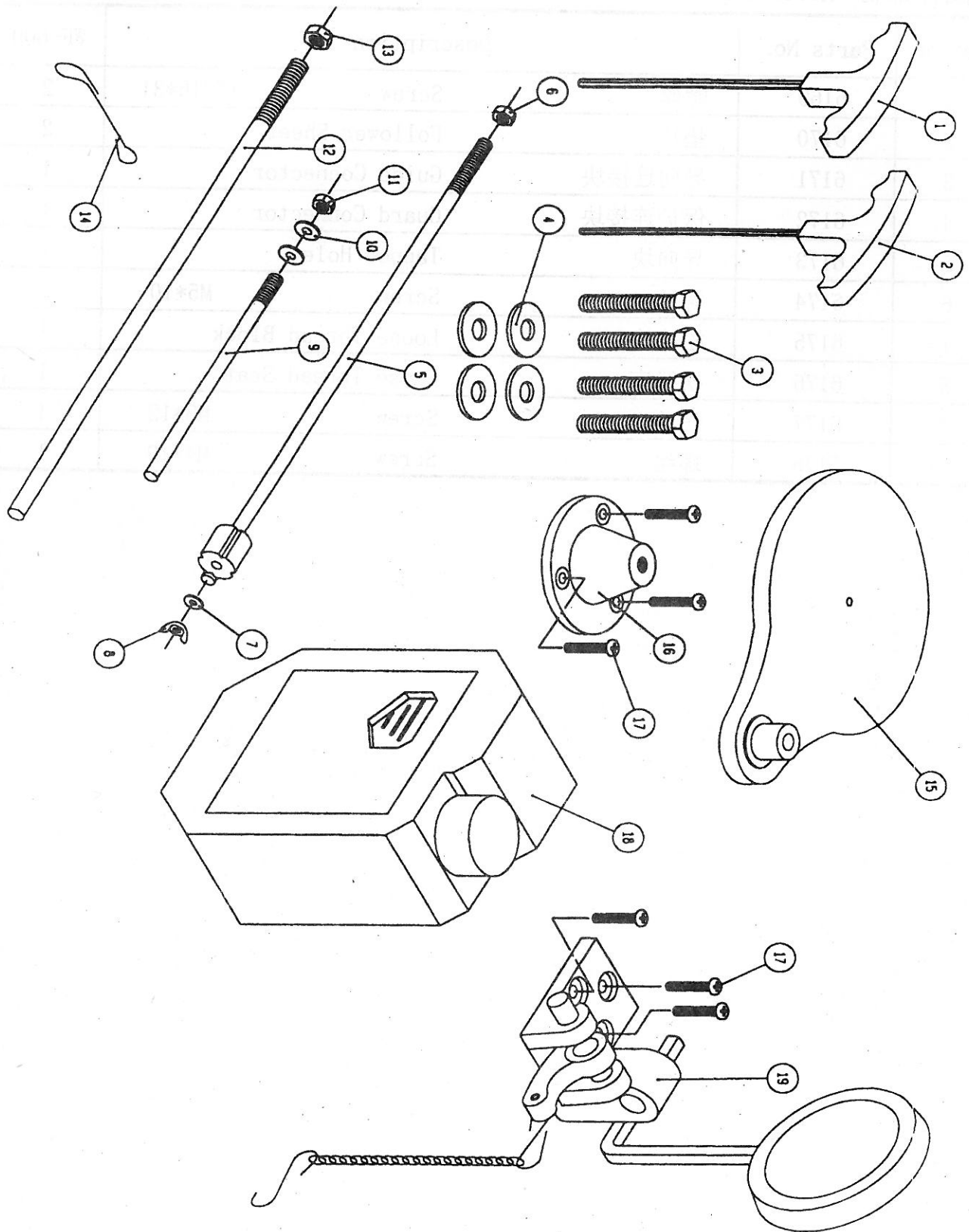
(Attachment Part):



H. (Attachment Part):

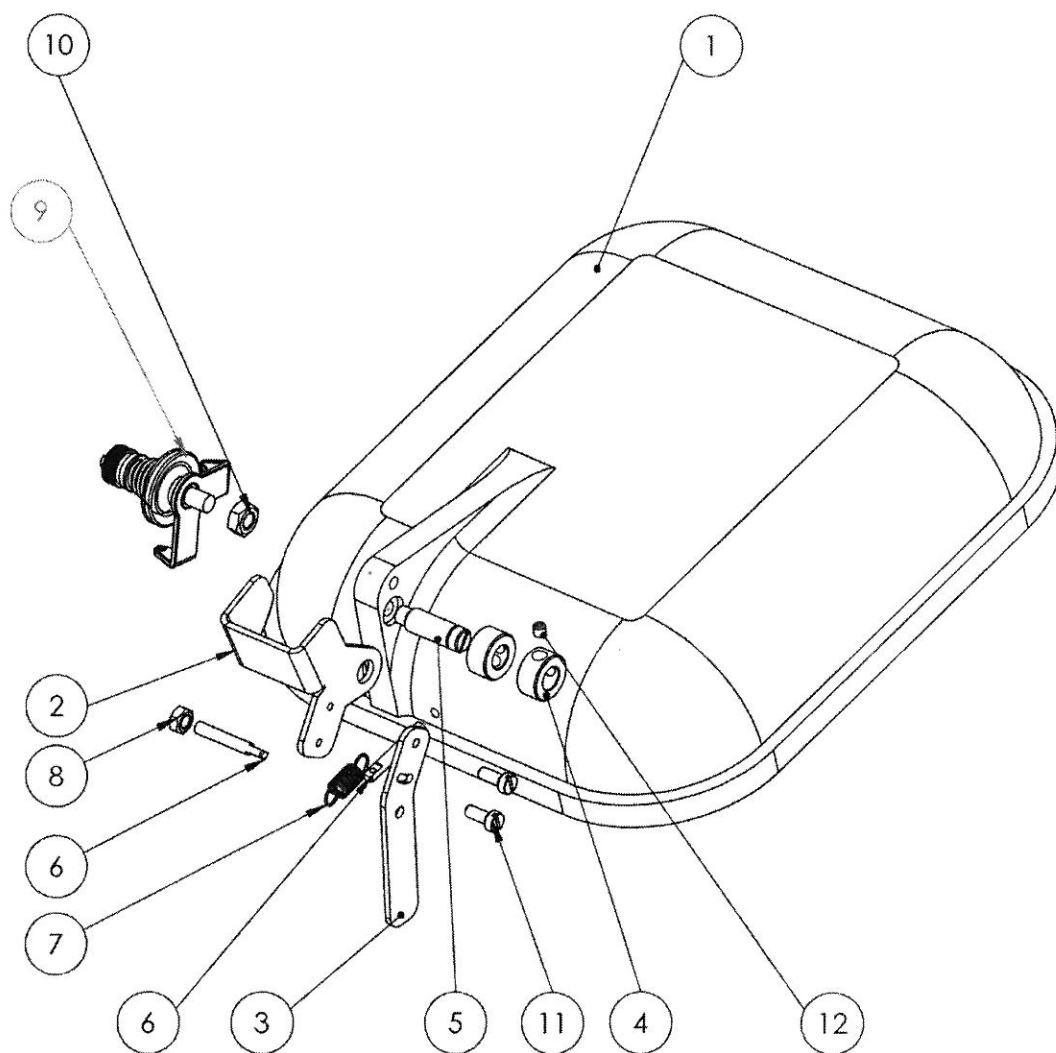
Ref.No	Parts No.	Description	
1	6169	Screw 15/16*31	2
2	6170	Follower Sheet	2
3	6171	Guide Connector	1
4	6172	Guard Connector	1
5	6173	Tapped Hole	1
6	6174	Screw M5*10	2
7	6175	Loose Thread Block	1
8	6176	Loose Thread Seat	1
9	6177	Screw M5*12	1
10	6178	Screw M4*10	1

I. (Accessories Part):



J. Otevírání napínače nitě (pouze pro GS-623)

Thread Tension Release (for GS-623 only)





J. Otevírání napínače nitě (pouze pro GS-623)

Thread Tension Release (for GS-623 only)

Ref. No	Parts No	Popis/Description	PCS
1	GS-623-103	Horní víko - úprava pro GS-623 Upper lid – modification for GS-623	1
2	GS-623-102	Páka otevírací / Opening Lever	1
3	GS-623-101	Páka / Lever	1
4	C2606032	Kroužek / Collar	2
5	C2506032	Šroub / Screw	1
6	E3206032	Držák pružiny / Spring holder	2
7	8-0418	Pružina / Spring	1
8	DIN 934 M4	Matice / Nut	1
9	D3501507	Napínač / Thread Tension Assy.	1
10	DIN 934 M6	Matice / Nut	1
11	DIN 84 M4x10	Šroub /Screw	2
12	DIN 913 M5	Šroub / Screw	4
13			



K. Vybavení pro šití malých rádiusů (pouze pro GS-623)

Device for sewing of small radii (for GS-623 only)

Ref. No	Parts No	Popis / Description	PCS
1	314.0399	Zařízení pro šití malých rádiusů Sewing set for sewing small radii	1
2	C2906032	Šroub / Screw	1
3	GS-623-201	Páka / Lever	1
4	4x30	Vrut (4x30) / Screw (4x30)	4
5	DIN 912 M5x15	Šroub / Screw	2
6	GS-623-210	Pedál malý / Small treadle	1
7	GC-317(319)-2	Příložka / Plate	1
8	162.0056	Pružina / Spring	1
9	GS-623-203	Kroužek distanční / Distance Ring	1
10	DIN 84 M5x10	Šroub / Screw	1
11	GS-623-206	Oko s vrutem / Ring with screw	1
12	GS-623-202	Držák / Holder	1
13	CZ B05	Plát / Table Top	1
14	DIN 912 M6x20	Šroub / Screw	2
15	33ALEB130	Táhlo motoru / Pitman Rod	2
16			